

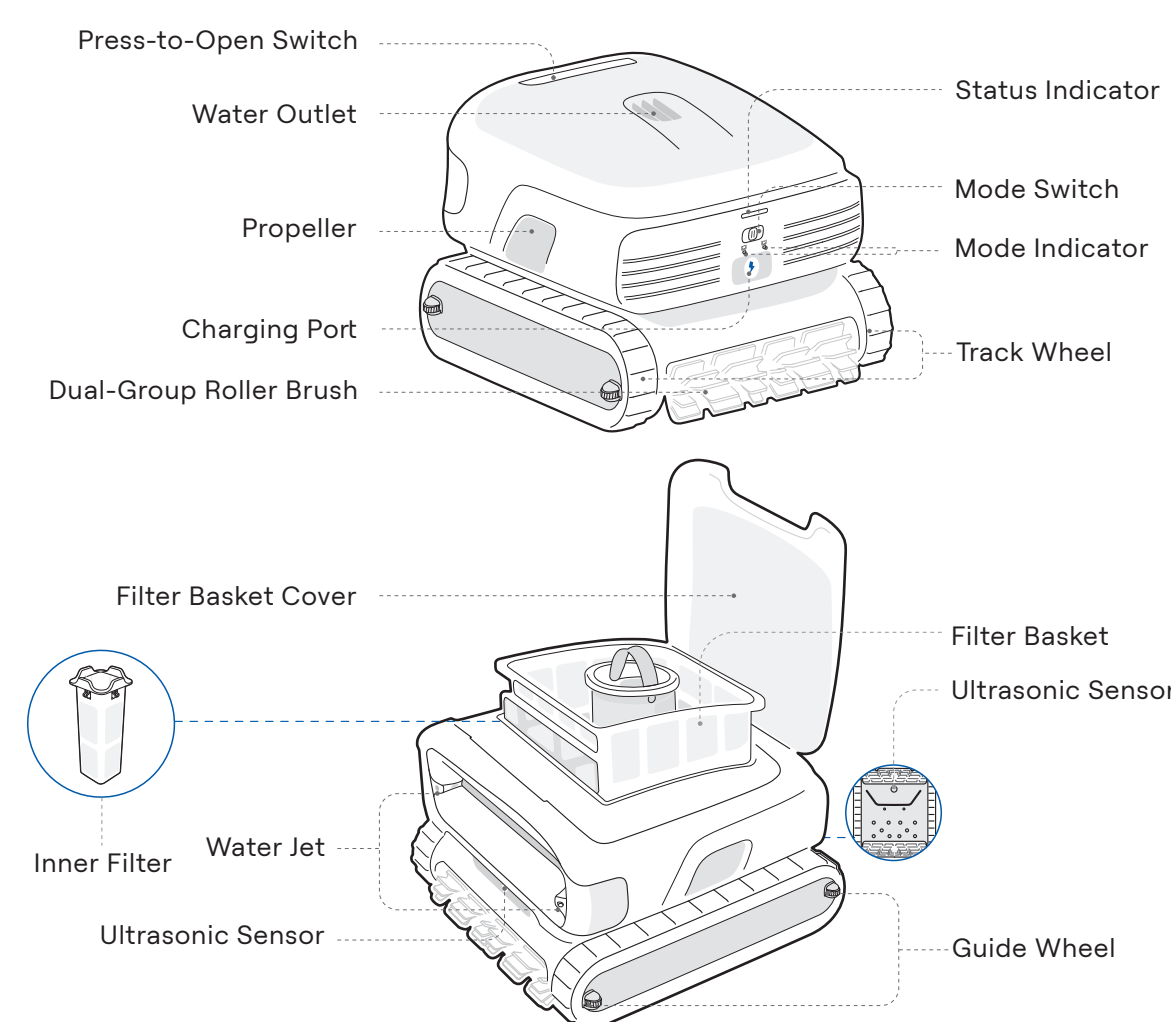
Beatbot Quick Start Guide

Quick Start Guide



Scan to Check E-Manual

1 Structure Diagram

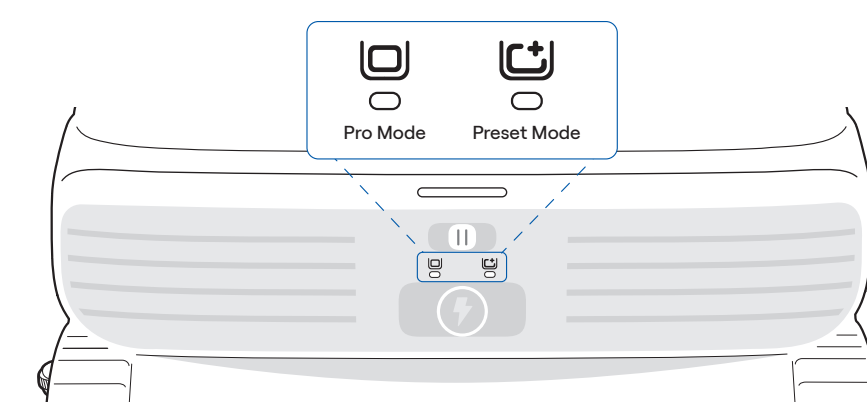


*The diagram is for reference only. Please refer to the actual product for accuracy.

4 Power On & Select Mode

When the robot is off:
Push the mode switch to / and release immediately (within 1 second) to power the robot on. The cleaning mode is selected based on the direction you pushed. And the corresponding mode indicator turns solid white.

When the robot is on:
Push the switch to the desired position and release it immediately (within 1 second) to change the cleaning mode.

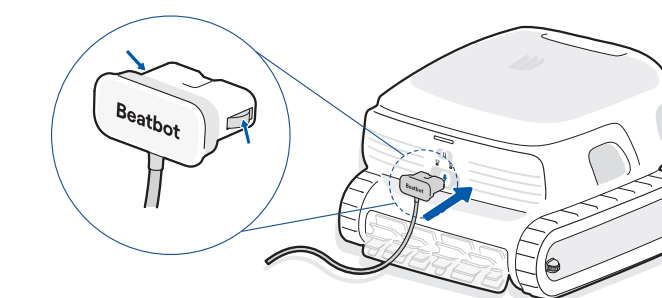


Cleaning Mode	Coverage
Pro Mode	Floor, Walls & Waterline, Surface
Preset Mode (Standard Mode defaulted)	Floor, Walls & Waterline

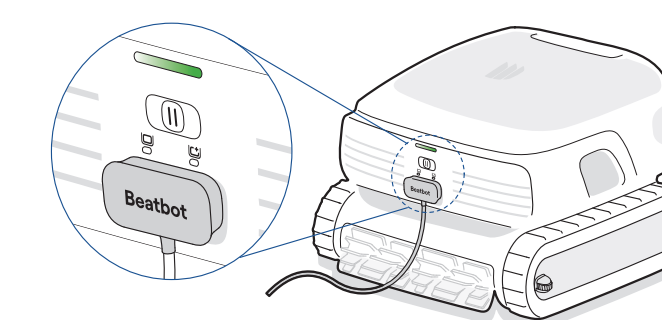
Tip:
You can select other cleaning modes (Floor Mode, Surface Mode, etc.) via the App. Your selection will automatically sync to the robot, allowing you to start it directly with the switch next time.

2 Start Charging

1. Ensure the charging contacts on the both sides of charger are dry and clean. Align and connect the charger to the robot's charging port.



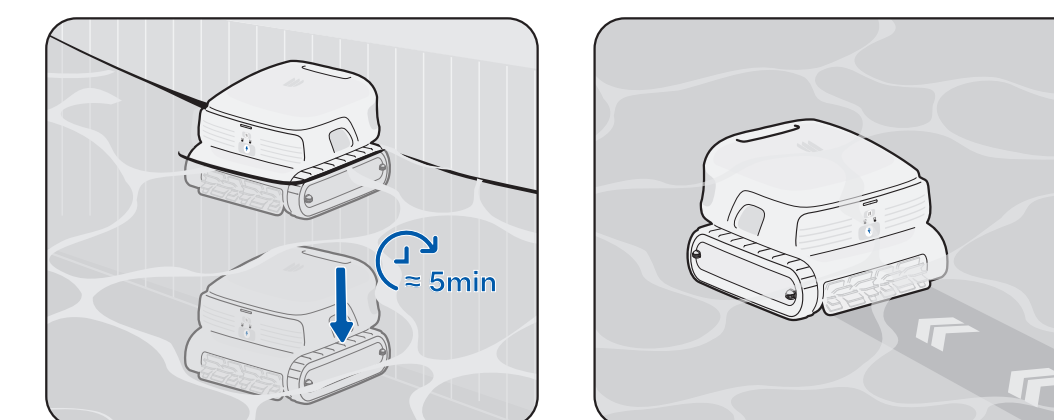
2. Plug the charger into a power outlet. A breathing light indicates charging is in progress. The robot is fully charged when the status indicator turns solid green.



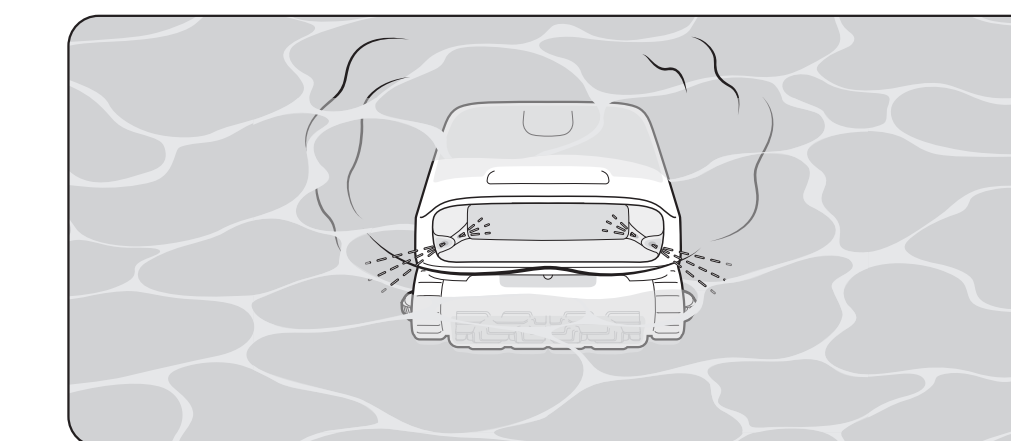
Tips:
1. The robot is shipped from the factory not fully charged, as indicated by a yellow status light. Please charge it completely before initial use to ensure optimal performance.
2. Please charge the robot indoors in a dry, cool place with stable Wi-Fi coverage.

5 Start Cleaning

1. Gently place the robot into the water along the pool wall.
2. In Pro/Standard Mode, the robot begins to submerge and will settle on the pool floor within 5 minutes. Once settled, it will automatically begin cleaning.



3. In Surface Mode, the robot will begin cleaning immediately upon entering the water.



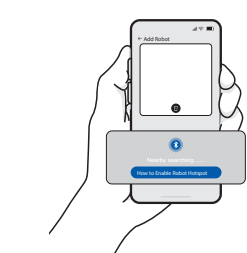
3 APP

You can either scan the QR code below or search for "Beatbot" in the App Store or Google Play to download the App.



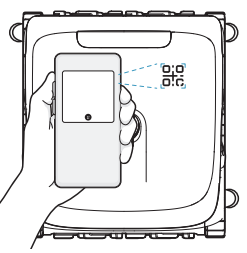
Once powered on, the robot will automatically enter network setup mode. Open the Beatbot App. Tap "Add Robot" on the home page, then choose one of the following methods to add your robot and complete the setup:

Add via Bluetooth



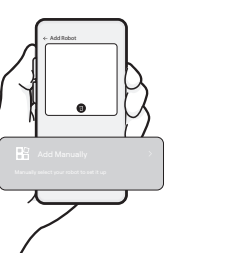
Ensure Bluetooth is enabled on your mobile phone. It will automatically search for your robot model.

Scan to Add



Aim your phone's camera at the QR code located on the robot.

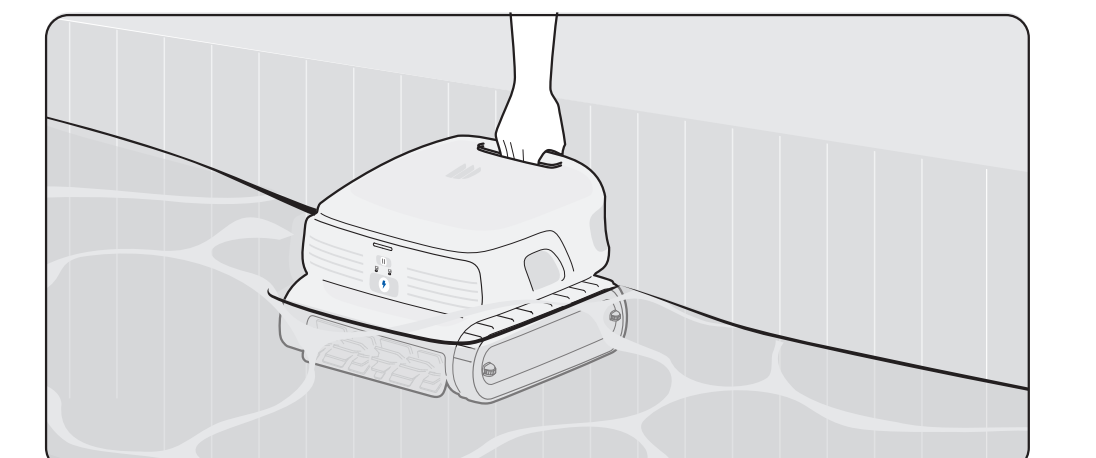
Add Manually



Tap "Add Manually", select your robot model from the list.

6 Retrieve

1. After completing the cleaning task, the robot will automatically park itself at the poolside. When lifted out of the water, it will begin draining automatically.



2. In the unlikely event that the robot does not return to the poolside automatically, you can manually retrieve it using the supplied hook.

