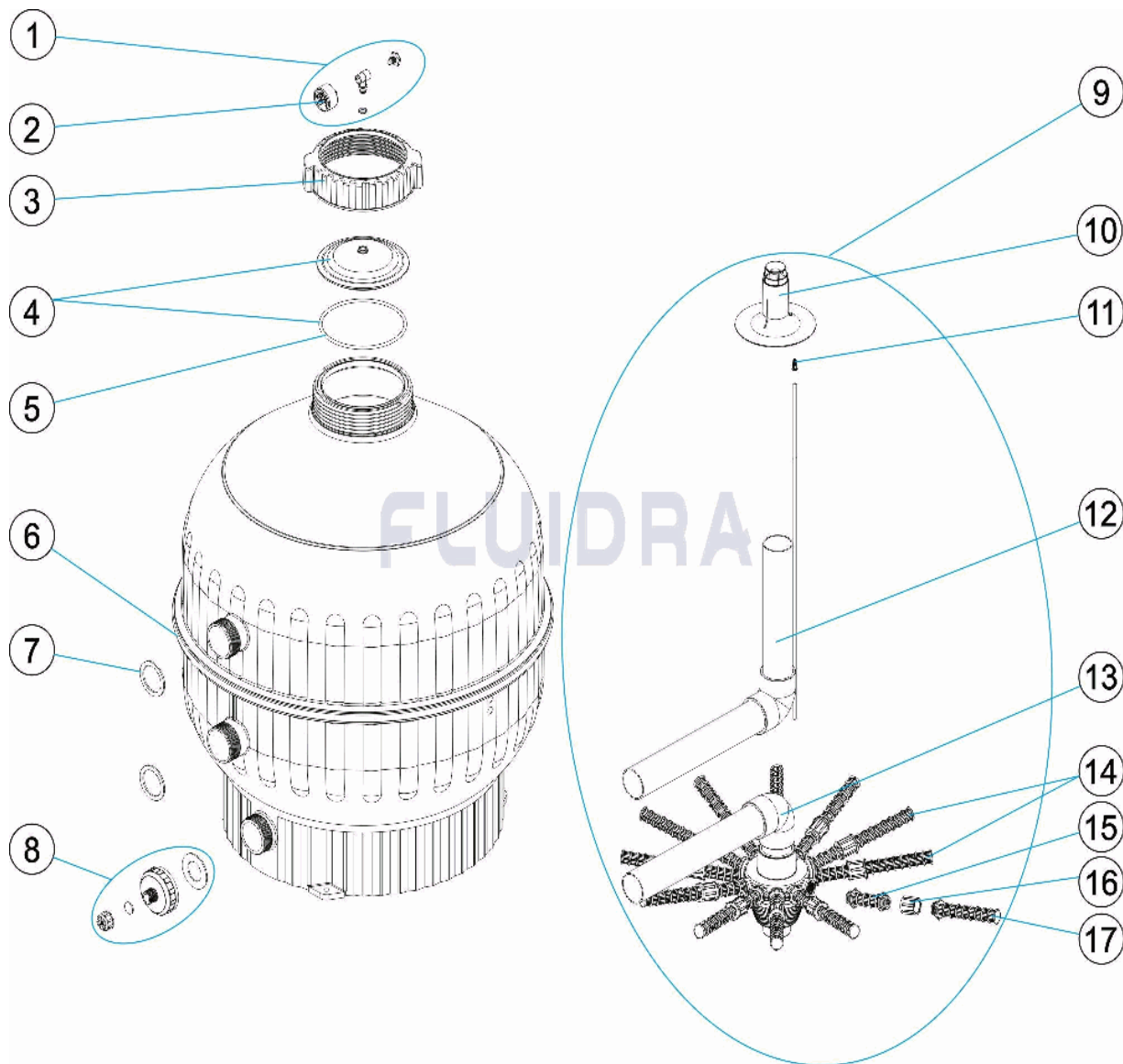


CODIGO **15784**

DESCRIPCION: **FILTRO CANTABRIC 750**



**ESPAÑOL**

POS	CODIGO	DESCRIPCION	CANTIDAD	POS	CODIGO	DESCRIPCION	CANTIDAD
1	4404080104	MANOMETRO COMPLETO		10	4404180028	DIFUSOR D. 750	
2	4404010103	MANOMETRO 1/8" 3 KG./C "		11	4404040108	PURGA AIRE	
3	4404180007	TUERCA TAPA CANTABRIC		12	4404180012	CJTO. DIFUSOR D. 750	
4	4404180101	TAPA TRANSPARENTE EASTAR D.173 (PCT		13	4404180013	CJTO. COLECTOR D.750	
5	4404180201	JUNTA TORICA		14	4404010086	CJTO. BRAZOS COLECTOR 3/4" D. 750"	
6	4404180026	PERFIL EMBELLECEDOR D. 750		15	* 4404180117	BRAZO COLECTOR 3/4" 100 M "	
7	4404180408	JUNTA PLANA 55X72X3,5		16	* 4404180118	MANGUITO ENLACE 3/4"	
8	4404180114	PURGA ARENA 2'		17	* 4404300120	BRAZO COLECTOR 3/4" 160 M "	
9	4404180027	CJTO. INTERIOR CTB D. 750					

**CODIGO 15784**

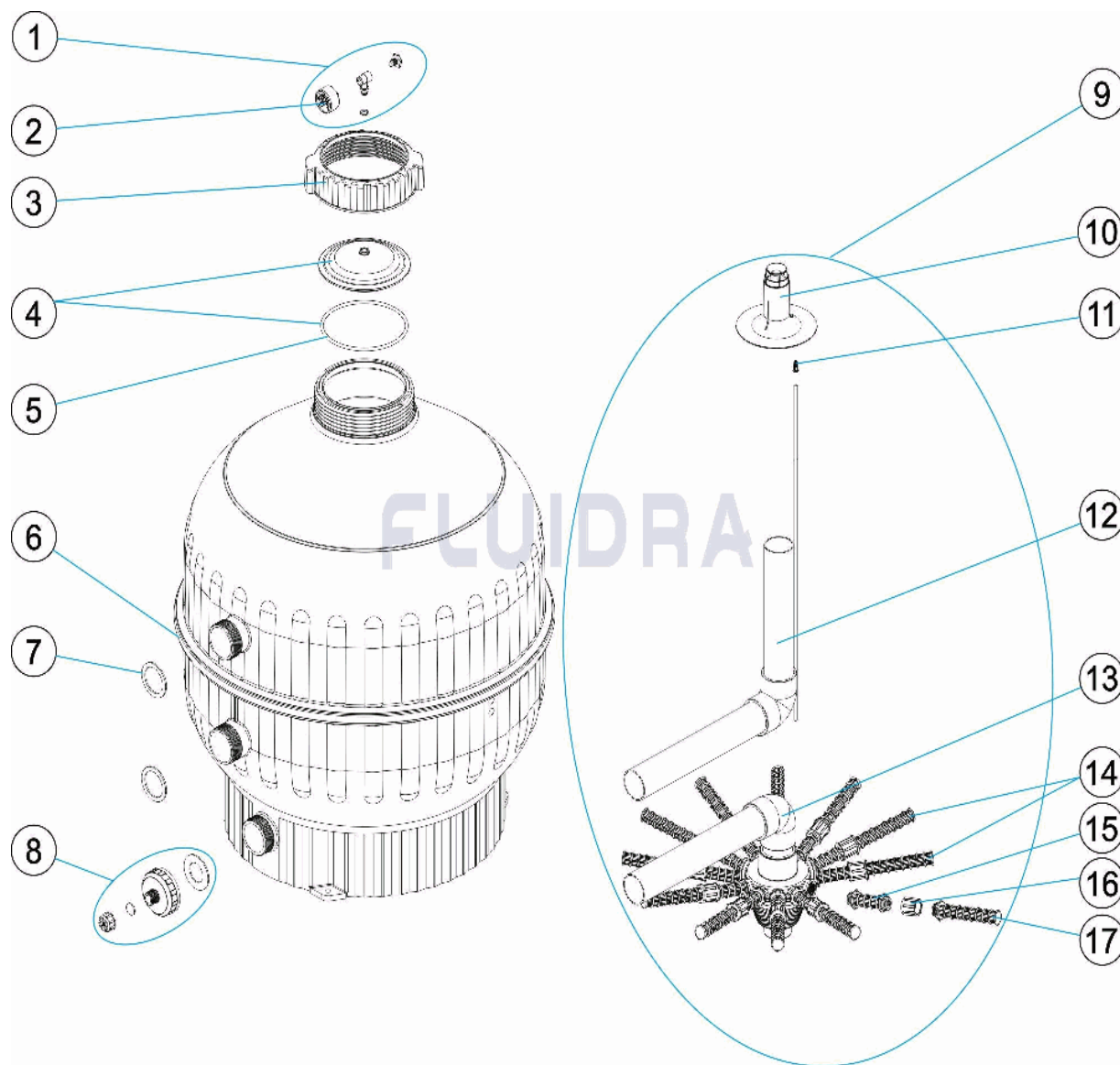
**DESCRIPCION: FILTRO CANTABRIC 750**

**OBSERVACIONES**

POS	CODIGO	OBSERVACIONES
15	* 4404180117	PARA: 15784 [3UNIDADES]
16	* 4404180118	PARA: 15784 [3UNIDADES]
17	* 4404300120	PARA: 15784 [6UNIDADES]

CODE 15784

DESCRIPTION: FILTRE CANTABRIC 750



FRANCAIS

POS	CODE	DESCRIPTION	QUANTITE	POS	CODE	DESCRIPTION	QUANTITE
1	4404080104	MANOMETRE COMPLET		10	4404180028	DIFUSOR D. 750	
2	4404010103	MANOMETRE 1/8" 3 KG./C "		11	4404040108	PURGE D'AIR	
3	4404180007	ECROU DE COUVERCLE CANTABRIC		12	4404180012	ENSEMBLE DIFFUSEUR D. 750	
4	4404180101	COUVERCLE TRANSPARENT " EASTAR " D		13	4404180013	ENSEMBLE COLLECTEUR D. 750	
5	4404180201	JOINT TORIQUE		14	4404010086	ENSEMBLE BRAS DE REPARTITEUR 3/4" D.	
6	4404180026	ANNEAU DE PROTECTION D. 750		15	* 4404180117	BRAS DE REPARTITEUR 3/4" 100M "	
7	4404180408	JOINT PLAT 55X72X3,5		16	* 4404180118	MANCHON 3/4"	
8	4404180114	PURGE SABLE 2"		17	* 4404300120	BRAS DE REPARTITEUR 3/4" 160M "	
9	4404180027	ENSEMBLE INTERIEUR D. 750					

CODE **15784**

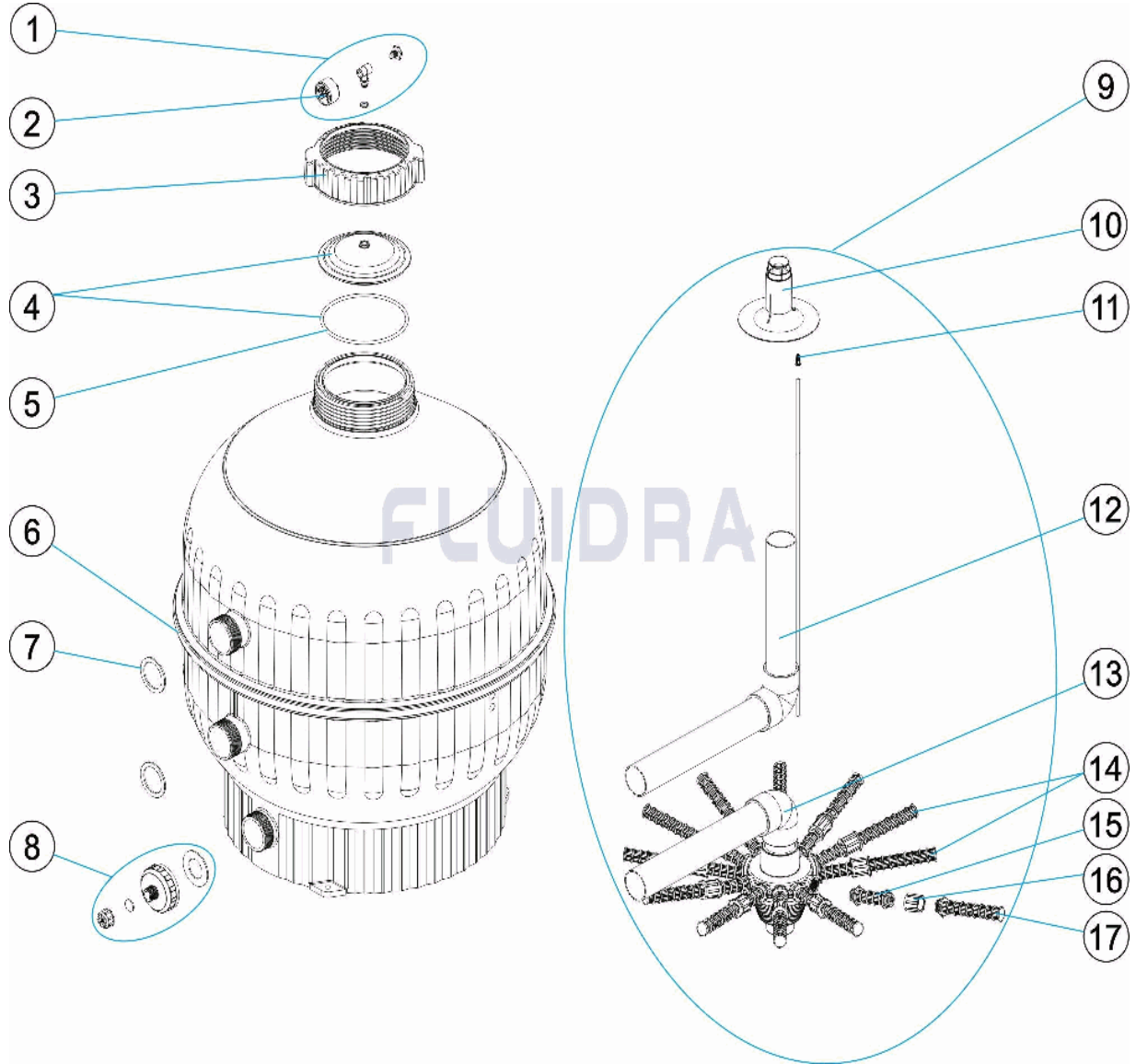
DESCRIPTION: **FILTRE CANTABRIC 750**

**OBSERVATIONS**

POS	CODE	OBSERVATIONS
15	* 4404180117	POUR: 15784 [3UT]
16	* 4404180118	POUR: 15784 [3UT]
17	* 4404300120	POUR: 15784 [6UT]

CODE **15784**

DESCRIPTION: **CANTABRIC FILTER 750**



**ENGLISH**

POS	CODE	DESCRIPTION	QUANTITY	POS	CODE	DESCRIPTION	QUANTITY
1	4404080104	COMPLETE PRESSURE GAUGE UNIT		10	4404180028	D. 750 DIFFUSER	
2	4404010103	PRESSURE GAUGE 1/8" 3 KG./C "		11	4404040108	AIR PURGE	
3	4404180007	THREADED LID COLLAR CANTABRIC		12	4404180012	DIFFUSER ASSEMBLY D. 750	
4	4404180101	TRANSPARENT LID " EASTAR" D.173 + 'O' R		13	4404180013	MANIFOLD ASSEMBLY D. 750	
5	4404180201	O' RING		14	4404010086	MANIFOLD ARM ASSEMBLY 3/4" D. 750"	
6	4404180026	PROFILE FACEPLATE D. 750		15	* 4404180117	MANIFOLD ARM 3/4" 100 M "	
7	4404180408	FLAT GASKET 55X72X3,5		16	* 4404180118	UNION BUSH 3/4"	
8	4404180114	SAND PURGE 2"		17	* 4404300120	MANIFOLD ARM 3/4" 160 M "	
9	4404180027	COLLECTOR ASSEMBLY CANTABRIC D. 75					

CODE                    **15784**

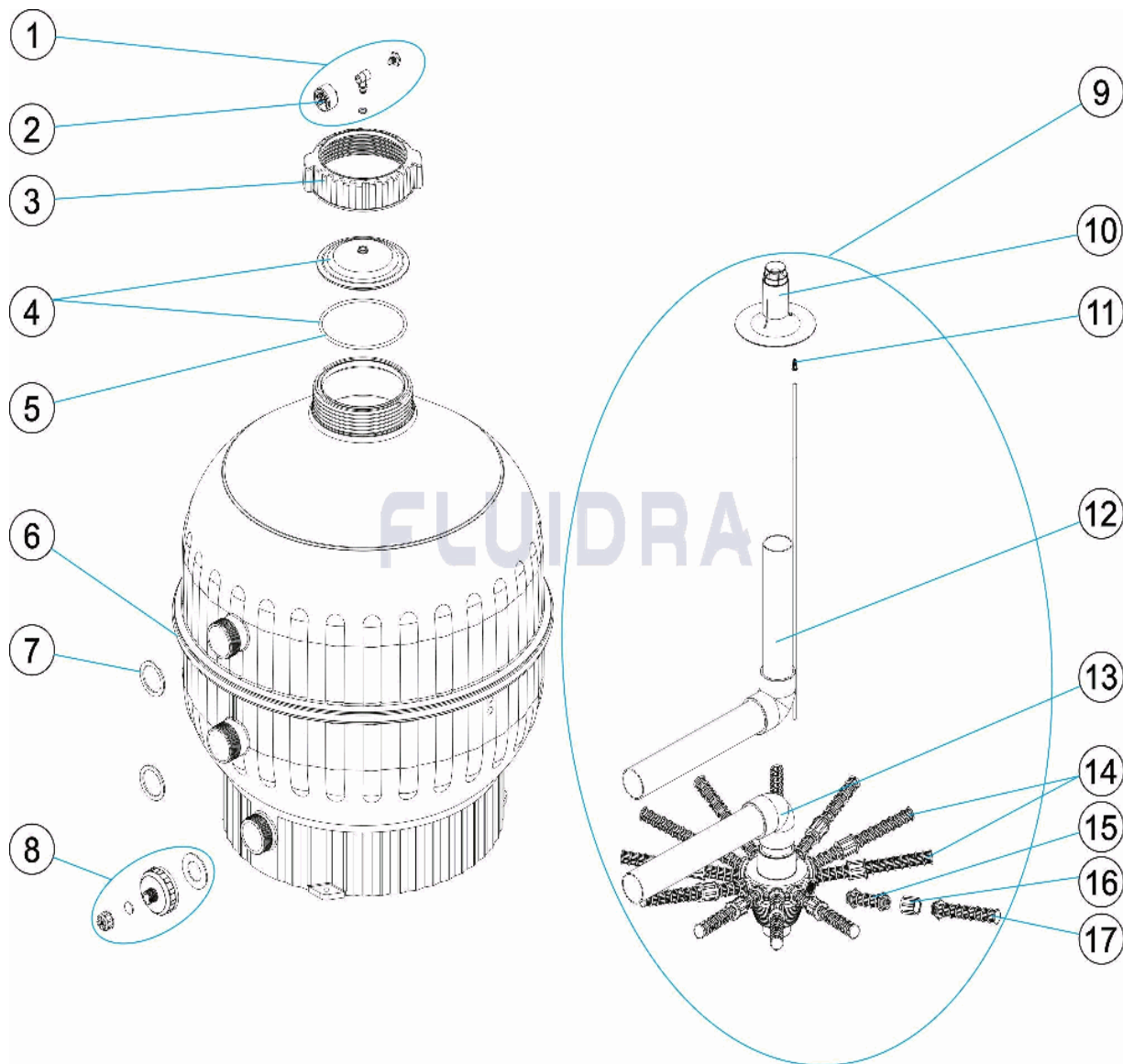
DESCRIPTION: **CANTABRIC FILTER 750**

### OBSERVATIONS

POS	CODE	OBSERVATIONS
15	* 4404180117	FOR: 15784 [3UT]
16	* 4404180118	FOR: 15784 [3UT]
17	* 4404300120	FOR: 15784 [6UT]

CODICE 15784

DESCRIZIONE: FILTRO CANTABRIC 750



ITALIANO

POS	CODICE	DESCRIZIONE	QUANTITA'	POS	CODICE	DESCRIZIONE	QUANTITA'
1	4404080104	MANOMETRO COMPLETO		10	4404180028	DIFFUSORE D. 750	
2	4404010103	MANOMETRO 1/8" 3 KG./C "		11	4404040108	SFIATO ARIA	
3	4404180007	GHIERA COPERCHIO CANTABRIC		12	4404180012	RACCORDO DIFFUSORE D. 750	
4	4404180101	COPERCHIO TRASPARENTE " EASTAR " I		13	4404180013	KIT COLLETTORE D. 750	
5	4404180201	O-RING		14	4404010086	GRUPPO CANDELOTTO COLLECTORE 3/4"	
6	4404180026	PROFILO FLANGIA D. 750		15	* 4404180117	CANDELOTTO COLLECTORE 3/4" 100M "	
7	4404180408	GUERNICIONE PIANA 55X72X3,5		16	* 4404180118	MANICOTTO DA 1" 3/4"	
8	4404180114	SCARICO SABBIA 2"		17	* 4404300120	CANDELOTTO COLLECTORE 3/4" 160M "	
9	4404180027	KIT COLLETTORE CANTABRIC D. 750					

**CODICE 15784**

**DESCRIZIONE: FILTRO CANTABRIC 750**

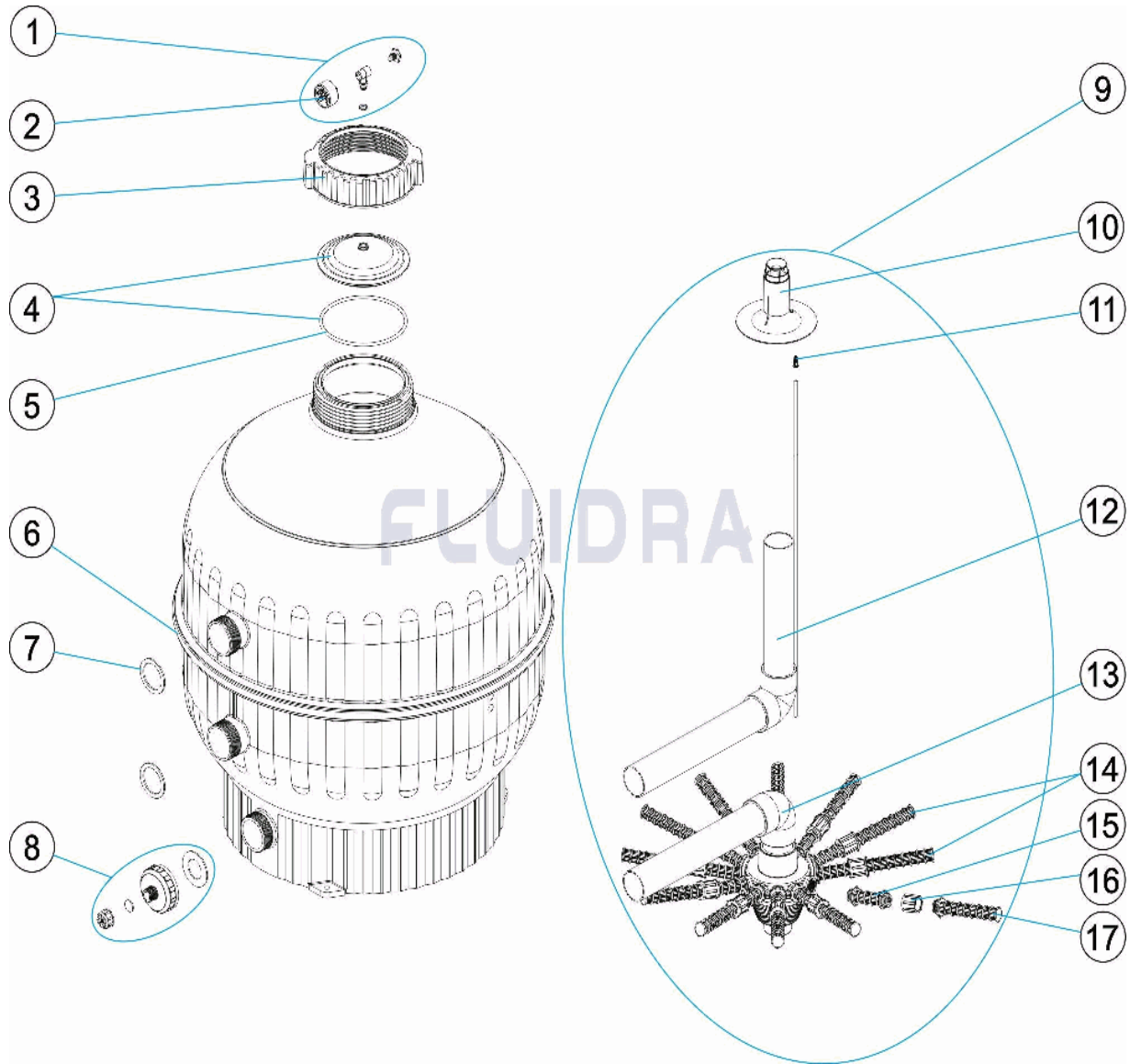
**OSSERVAZIONI**

POS	CODICE	OSSERVAZIONI
15	* 4404180117	PER: 15784 [3UT]
16	* 4404180118	PER: 15784 [3UT]
17	* 4404300120	PER: 15784 [6UT]



CODE **15784**

BESCHREIBUNG: **FILTER CANTABRIC 750**



**DEUTSCH**

POS	CODE	BESCHREIBUNG	MENGE	POS	CODE	BESCHREIBUNG	MENGE
1	4404080104	MANOMETER KOMPLETT		10	4404180028	WASSERVERTEILER D. 750	
2	4404010103	MANOMETER 1/8" 3 KG/C "		11	4404040108	ENTLÜFTUNG	
3	4404180007	MUTTER ABDECKUNG CANTABRIC		12	4404180012	SET WASSERVERTEILER D. 750	
4	4404180101	ABDECKUNG TRANSPARENT D.173 PCTA l		13	4404180013	SAMMELROHRSET D. 750	
5	4404180201	O-RING		14	4404010086	SET FILTERSTERN-SCHLITZROHR 3/4" D. 7	
6	4404180026	PROFIL BLENDE D. 750		15	* 4404180117	FILTERSTERN-SCHLITZROHR 3/4" 100 M "	
7	4404180408	FLACHDICHTUNG 55 X 72 X 3,5		16	* 4404180118	NIPPEL ANSCHLUSS 3/4"	
8	4404180114	SANDENTLEERUNG 2"		17	* 4404300120	FILTERSTERN-SCHLITZROHR 3/4" 160 M "	
9	4404180027	SAMMELROHRSET CTB D. 750					

CODE **15784**

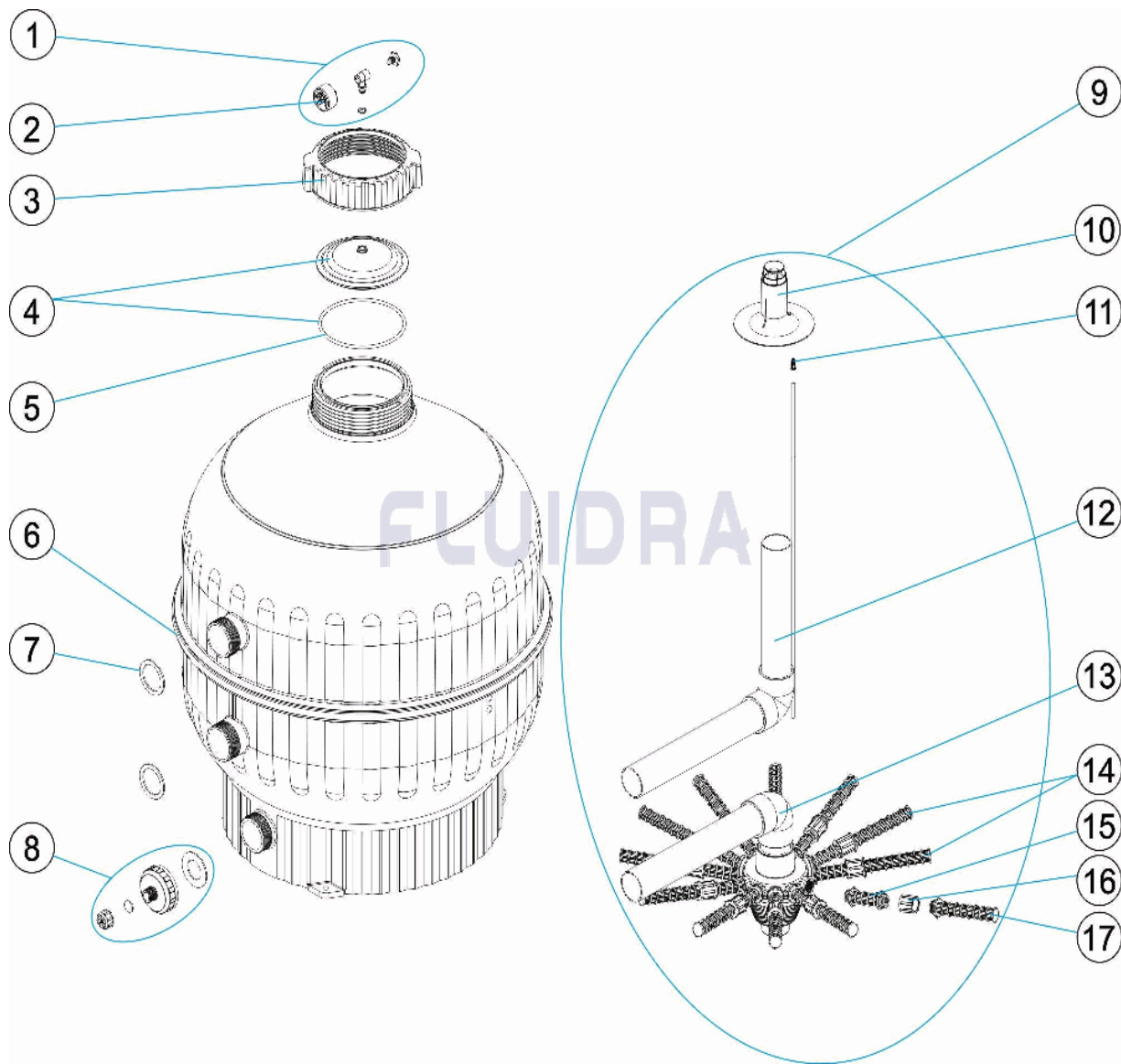
BESCHREIBUNG: **FILTER CANTABRIC 750**

**HINWEISE**

POS	CODE	HINWEISE
15	* 4404180117	FÜR: 15784 [3UT]
16	* 4404180118	FÜR: 15784 [3UT]
17	* 4404300120	FÜR: 15784 [6UT]

CODIGO **15784**

DESCRIÇÃO: **FILTRO CANTABRIC 750**



**PORTUGUES**

POS	CODIGO	DESCRIÇÃO	JANTIDADE	POS	CODIGO	DESCRIÇÃO	JANTIDADE
1	4404080104	MANÓMETRO COMPLETO		10	4404180028	DIFUSOR D. 750	
2	4404010103	MANOMETRO 1/8" 3 KG./C "		11	4404040108	PURGA AREIA	
3	4404180007	PORCA TAMPA CANTABRIC		12	4404180012	CJTO. DIFUSOR D. 750	
4	4404180101	TAMPA TRANSPARENTE " EASTAR" D.173		13	4404180013	CJTO. COLECTOR D. 750	
5	4404180201	JUNTA TÓRICA		14	4404010086	CJTO. BRAÇO COLECTOR 3/4" D. 750"	
6	4404180026	PERFIL EMBELEZADOR D. 750		15	* 4404180117	BRAÇO COLECTOR 3/4" 100M "	
7	4404180408	JUNTA PLANA 55X72X3,5		16	* 4404180118	MANGUITO UNIÃO 3/4"	
8	4404180114	PURGA AREIA 2"		17	* 4404300120	BRAÇO COLECTOR 3/4" 160M "	
9	4404180027	CONJUNTO COLECTOR CANTABRIC D. 750					

**CODIGO 15784**

**DESCRIÇÃO: FILTRO CANTABRIC 750**

**OBSERVAÇÕES**

POS	CODIGO	OBSERVAÇÕES
15	* 4404180117	PARA: 15784 [3UT]
16	* 4404180118	PARA: 15784 [3UT]
17	* 4404300120	PARA: 15784 [6UT]