

CUT-OUT VIEW



ROUND MODELS



SQUARE MODELS



OTHER FULL SS POOL SHELL SOLUTIONS FOR A BETTER FINISHING AND DESIGN:

- SS Skimmer Slim- 56313 - 56316
- Skimmers embellishers in SS - 74101 pe.
- LumiPlus FlexiNiche Full SS
- High Water Level Skimmer in SS - 73501 - 73502



STAINLESS STEEL MAINTENANCE: FREQUENCY DEPENDS ON POOL ENVIRONMENT AND CHLORINATION

POOL ENVIROMENT	CHLORINATION	MAINTENANCE FREQUENCY	CLEANING & MAINTENANCE	CLEANING FREQUENCY
Outdoor pools, inland	Chlorine	Standard	Rinse with fresh water	Weekly
			Wash with soap and water	Monthly
Outdoor pools, inland	Salt	High	Rinse with fresh water	Weekly
			Wash with soap and water	Weekly
			Remove any visible signs of rust or staining with a nylon brush	Monthly
Outdoor pools, coastal regions	Chlorine or salt	High	Rinse with fresh water	Weekly
			Wash with soap and water	Weekly
			Remove any visible signs of rust or staining with a nylon brush	Monthly
Indoor pools, all regions	Chlorine or salt	High	Rinse with fresh water	Weekly
			Wash with soap and water	Weekly
			Remove any visible signs of rust or staining with a nylon brush	Monthly

AstralPool' tips for lengthening the lifespan of our pools' stainless steel components

Keep the pool water in the following ranges of values:

Water pH between: 7.2-7.6

Alkalinity between: 100-175 ppm

Disinfection using Cl: 0.5-2 gr/m³

Disinfection using bromine between: 2-5 g/m³

Do not use salt-based disinfection systems if the concentration of NaCl is > 6000 ppm.

Water hardness control: 150-250 ppm.

Start with a weekly manual clean until the right frequency is found that matches a pool's requirements.

Keep gaps, joints and the water line clean and free of particles.

In facilities with starting blocks, pay special attention to the underside to prevent rusting from accumulated condensation.



STYLE

A POOL FITTINGS RANGE IN STAINLESS STEEL



FOR FURTHER INFORMATION
www.astralpool.com

FLUIDRA S.A.
www.fluidra.com



STAINLESS STEEL

Using Stainless Steel AISI 316-L in our pools has many advantages in comparison with traditional materials.

These are the reasons why AstralPool, world leader in the manufacturing and the supply of swimming pool equipment, launches a line of stainless steel sealing products, perfect for building, renovating and improving your pool.

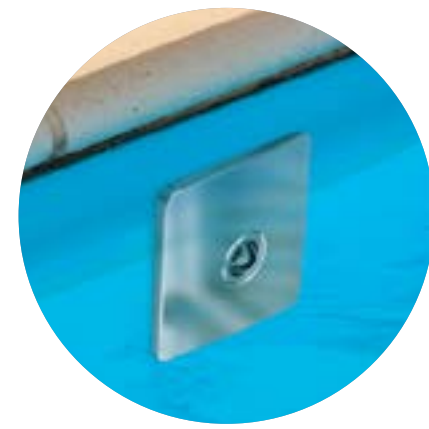


1. MORE SOLUTIONS FOR A PERFECT FINISH

- Round and square shapes with a contemporary design
- Better integration with pool basin
- Thanks to the new design, possible imperfections and installation is covered

2. EASY INSTALLATION

- Solutions available for Prefabricate and Concrete pool with different lengths to make installer life easier
- Compatible with all interchangeable accessories (plastic and stainless steel)
- Side smoothing for liner applications and easier to manipulate



3. EASE OF MAINTENANCE

- Easy to clean thanks to the new minimal design
- No visible screws in return inlets, avoiding possible corrosion

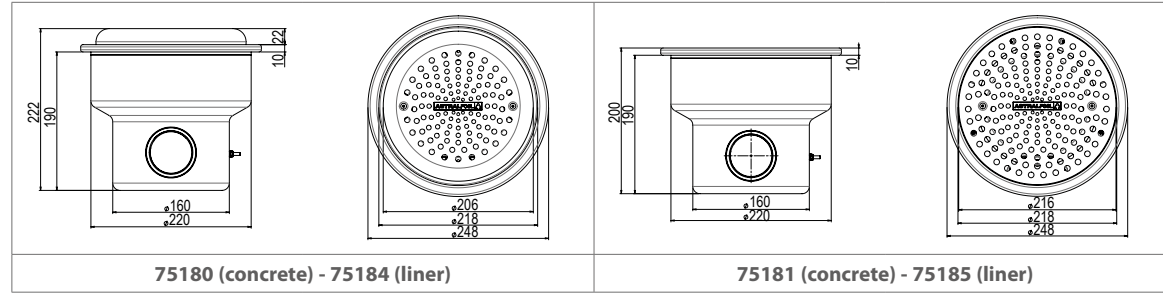
ROUND

MAIN DRAIN



Code	Type of pool	Type of cover	Embellisher shape	Dimensions	Flow rate	Outlet
75180	CONCRETE	ANTIVORTEX	ROUND	Ø250 x 230	13 m³/h	2"
75181	CONCRETE		ROUND	Ø250 x 110	13 m³/h	2"
75184	LINER	ANTIVORTEX	ROUND	Ø250 x 230	13 m³/h	2"
75185	LINER		ROUND	Ø250 x 110	13 m³/h	2"

DIMENSIONS



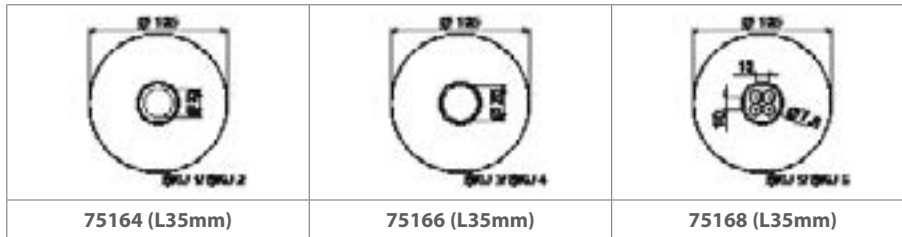
RETURN INLET



Code	Type of pool	Ball diameter	Embellisher shape	Dimensions	Flow rate	Outlet
75164	CONCRETE*	Ø 20mm	ROUND	Ø105 x L35mm	4,50 m3/h	1 - 1/2"
75165	CONCRETE*	Ø 20mm	ROUND	Ø105 x L50mm	4,50 m3/h	1 - 1/2"
75166	CONCRETE*	Ø 25mm	ROUND	Ø105 x L35mm	7,00 m3/h	1 - 1/2"
75167	CONCRETE*	Ø 25mm	ROUND	Ø105 x L50mm	7,00 m3/h	1 - 1/2"
75168	CONCRETE*	4 x 8 mm	ROUND	Ø105 x L35mm	2,90 m3/h	1 - 1/2"
75169	CONCRETE*	4 x 8 mm	ROUND	Ø105 x L50mm	2,90 m3/h	1 - 1/2"

* For liners, use adaptators 75178/75179

DIMENSIONS

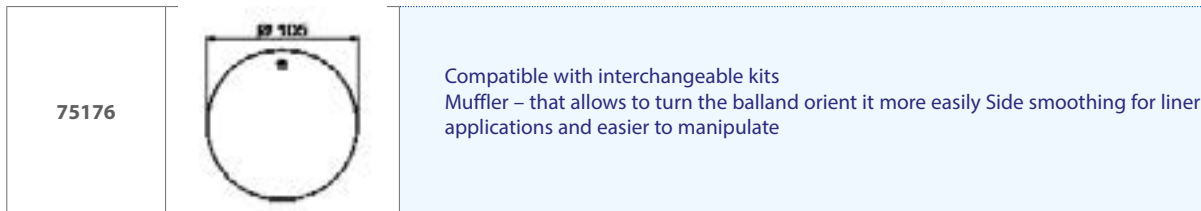


SUCTION INLET



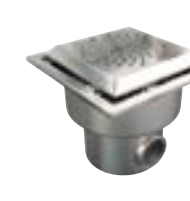
Code	Type of pool	Ball diameter	Embellisher shape	Dimensions	Flow rate	Outlet
75176	CONCRETE		ROUND	Ø105 x 45 mm		1 - 1/2"

DIMENSIONS



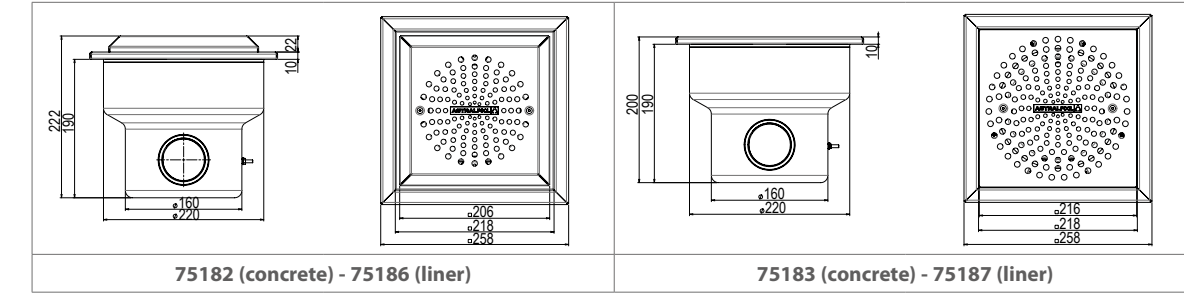
SQUARE

MAIN DRAIN



Code	Type of pool	Type of cover	Embellisher shape	Dimensions	Flow rate	Outlet
75182	CONCRETE	ANTIVORTEX	SQUARE	250x250 x 230	13 m3/h	2"
75183	CONCRETE		SQUARE	250x250 x 110	13 m3/h	2"
75186	LINER	ANTIVORTEX	SQUARE	250x250 x 230	13 m3/h	2"
75187	LINER		SQUARE	250x250 x 110	13 m3/h	2"

DIMENSIONS



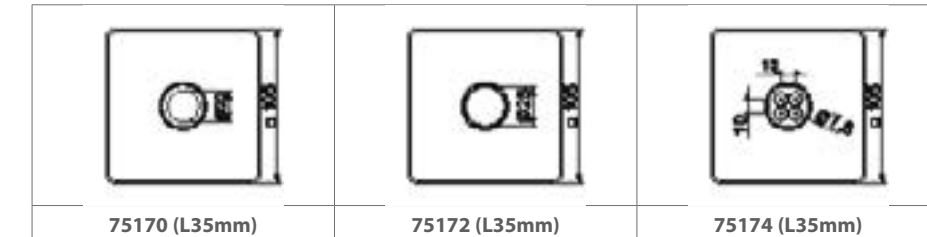
RETURN INLET



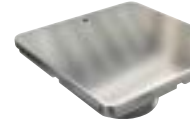
Code	Type of pool	Ball diameter	Embellisher shape	Dimensions	Flow rate	Outlet
75170	CONCRETE*	Ø 20mm	SQUARE	105x105 x L35mm	4,50 m3/h	1 - 1/2"
75171	CONCRETE*	Ø 20mm	SQUARE	105x105 x L50mm	4,50 m3/h	1 - 1/2"
75172	CONCRETE*	Ø 25mm	SQUARE	105x105 x L35mm	7,00 m3/h	1 - 1/2"
75173	CONCRETE*	Ø 25mm	SQUARE	105x105 x L50mm	7,00 m3/h	1 - 1/2"
75174	CONCRETE*	4 x 8 mm	SQUARE	105x105 x L35mm	2,90 m3/h	1 - 1/2"
75175	CONCRETE*	4 x 8 mm	SQUARE	105x105 x L50mm	2,90 m3/h	1 - 1/2"

* For liners, use adaptators 75178/75179

DIMENSIONS

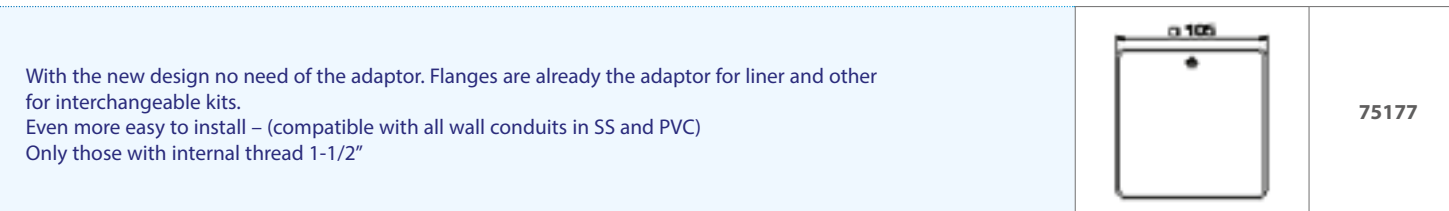


SUCTION INLET



Code	Type of pool	Ball diameter	Embellisher shape	Dimensions	Flow rate	Outlet
75177	CONCRETE		SQUARE	105x105 x 45 mm		1 - 1/2"

DIMENSIONS

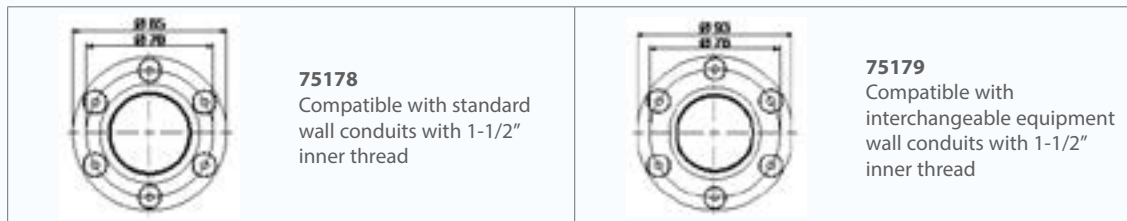


RETURN/ SUCTION INLET FOR LINERS



Code	Type of pool	Dimensions	Ø Screws	N° screws
75178	LINER ADAPTOR	Ø EXT. 85mm	Ø 70mm	6 x M6
75179	LINER ADAPTOR for INTERCHANGEABLE	Ø EXT. 93mm	Ø 78mm	6 x M6

DIMENSIONS



= LINER APPLICATIONS