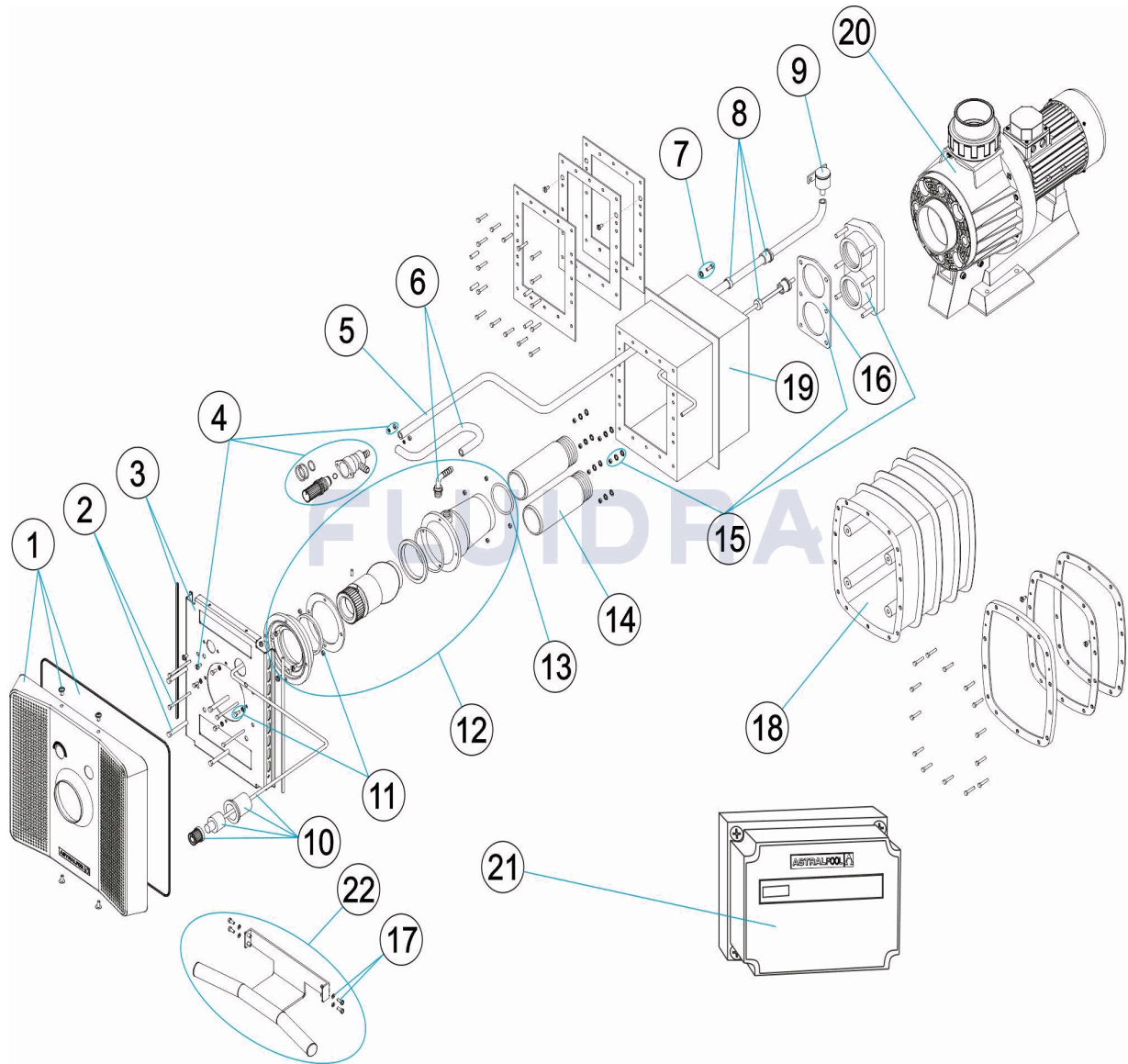


CODE **65489, 65535, 66470, 66471**

BESCHREIBUNG: **GEGENSCHWIMMGERÄT**



DEUTSCH

POS	CODE	BESCHREIBUNG	MENGE	POS	CODE	BESCHREIBUNG	MENGE
1	4402050053	FRONTPLATTE		12	4402050055	DÜSE KOMPLETT E.C.C.	
2	* 4402050050	SCHRAUBENSATZ BEFESTIGUNGSPLATIN		13	4402050503	O-RING 63 X 4	
2	* 4402050051	SCHRAUBENSATZ BEFESTIGUNGSPLATIN		14	4402050118	ROHR SAUG/DRUCK	
3	4402050054	BEFESTIGUNGSPLATINE EDELSTAHL UND		15	4402050107	ANSCHLUSSFLANSCH UND DICHTUNG	
4	4402050057	REGELVENTIL		16	4402050108	DICHTUNG ABDECKUNG E.C.C.	
5	4401070015	SAUGLEITUNG 1,5 M		17	4402050058	SCHRAUBENSATZ HALTEGRIFF	
6	4402050121	SAUGLEITUNG VENTURI L - 300 MM		18	11502		
7	4401090402	ERDUNG		19	00243	SPANNER SCHWIMMLEINEN	
8	4402050110	QUETSCHVERSCHRAUBUNG E.C.C.		20	65549		
9	4402050109	VENTIL LUFTANSAUGUNG		21	65536		
10	4402050056	DRUCKTASTER KOMPLETT		22	65535	HALTEGRIFF MIT SCHRAUBEN	
11	4402050052	SCHRAUBENSATZ BEFESTIGUNGSPLATIN					

CODE **65489, 65535, 66470, 66471**

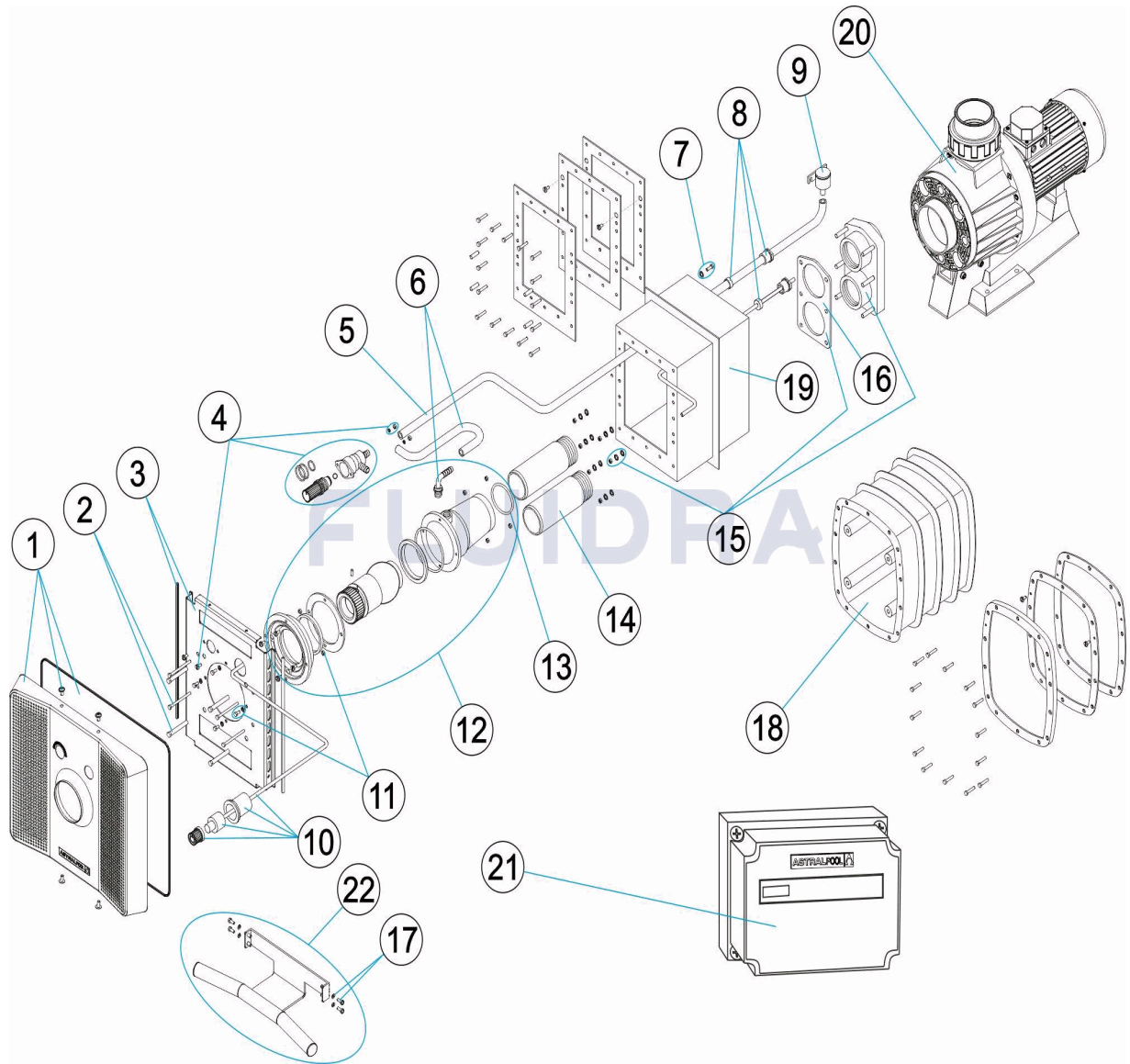
BESCHREIBUNG: **GEGENSCHWIMMGERÄT**

HINWEISE

POS	CODE	HINWEISE
2	* 4402050050	FÜR: PARA LA CAJA DE PLÁSTICO 11502
2	* 4402050051	FÜR: PARA LA CAJA DE INOX. 00243

CODE **65489, 65535, 66470, 66471**

DESCRIPTION: **COUNTER-CURRENT SWIMMING EQUIPMENT**



ENGLISH

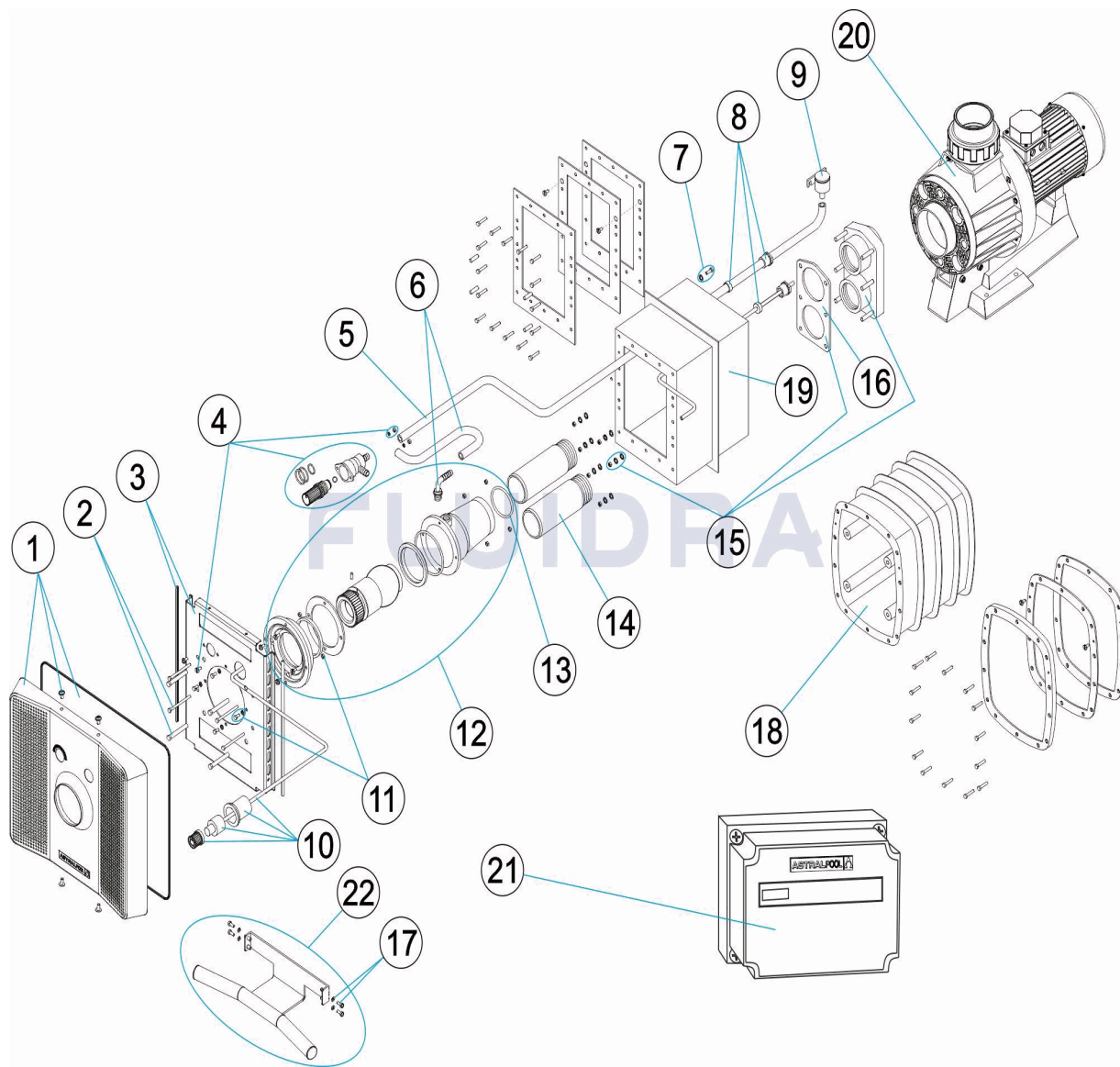
POS	CODE	DESCRIPTION	QUANTITY	POS	CODE	DESCRIPTION	QUANTITY
1	4402050053	FACEPLATE		12	4402050055	CUU COMPLETE INLET	
2	* 4402050050	S.S. FIXING PLATE BOLTS		13	4402050503	63X4 JOINT	
2	* 4402050051	PLASTIC FIXING PLATE SCREWS		14	4402050118	SUCTION / RETURN TUBE	
3	4402050054	S.S. FIXING PLATE + SUPPORT PROFILE		15	4402050107	FLANGE CONNECTION WITH GASKET	
4	4402050057	CUU REGULATOR VALVE		16	4402050108	CCU GASKET COVER	
5	4401070015	SUCTION GUIDE 1,5 M.		17	4402050058	SCREW KIT FOR GRABPULL	
6	4402050121	VENTURI SUCTION CONDUIT L-300 M/M.		18	11502		
7	4401090402	EARTH CONNECTION		19	00243	FLOAT TENSOR	
8	4402050110	CCU CABLE GLAND		20	65549		
9	4402050109	AIR SUCTION VALVE		21	65536		
10	4402050056	COMPLETE SWITCH		22	65535	GRABRAIL + SCREWS	
11	4402050052	FIXING PLATE BOLTS					

CODE **65489, 65535, 66470, 66471**DESCRIPTION: **COUNTER-CURRENT SWIMMING EQUIPMENT****OBSERVATIONS**

POS	CODE	OBSERVATIONS
2	* 4402050050	FOR: PARA LA CAJA DE PLÁSTICO 11502
2	* 4402050051	FOR: PARA LA CAJA DE INOX. 00243

CODIGO **65489, 65535, 66470, 66471**

DESCRIPCION: **EQUIPO NATACIÓN CONTRACORRIENTE NL**



ESPAÑOL

POS	CODIGO	DESCRIPCION	CANTIDAD	POS	CODIGO	DESCRIPCION	CANTIDAD
1	4402050053	CARATULA		12	4402050055	BOQUILLA COMPLETA E.C.C.	
2	* 4402050050	TORNILLERIA PLACA FIJACION INOX.		13	4402050503	JUNTA TORICA 63X4	
2	* 4402050051	TORNILLERIA PLACA FIJACION PLASTICO		14	4402050118	TUBO ASPIRACION / IMPULSION	
3	4402050054	PLACA FIJACION INOX. Y PERFIL		15	4402050107	BRIDA CONEXIÓN CON JUNTA	
4	4402050057	VALVULA REGULACION		16	4402050108	JUNTA TAPA E.C.C.	
5	4401070015	CONDUCTO ASPIRACION 1,5 M.		17	4402050058	TORNILLERIA AGARRADERA	
6	4402050121	CONDUCTO ASPIRACION VENTURI L-300 l		18	11502		
7	4401090402	TOMA DE TIERRA		19	00243	TENSOR CORCHERAS	
8	4402050110	PRENSAESTOPAS E.C.C.		20	65549		
9	4402050109	VALVULA ASPIRACION AIRE		21	65536		
10	4402050056	PULSADOR COMPLETO		22	65535	AGARRADERA + TORNILLOS	
11	4402050052	TORNILLERIA PLACA FIJACION					

CODIGO 65489, 65535, 66470, 66471

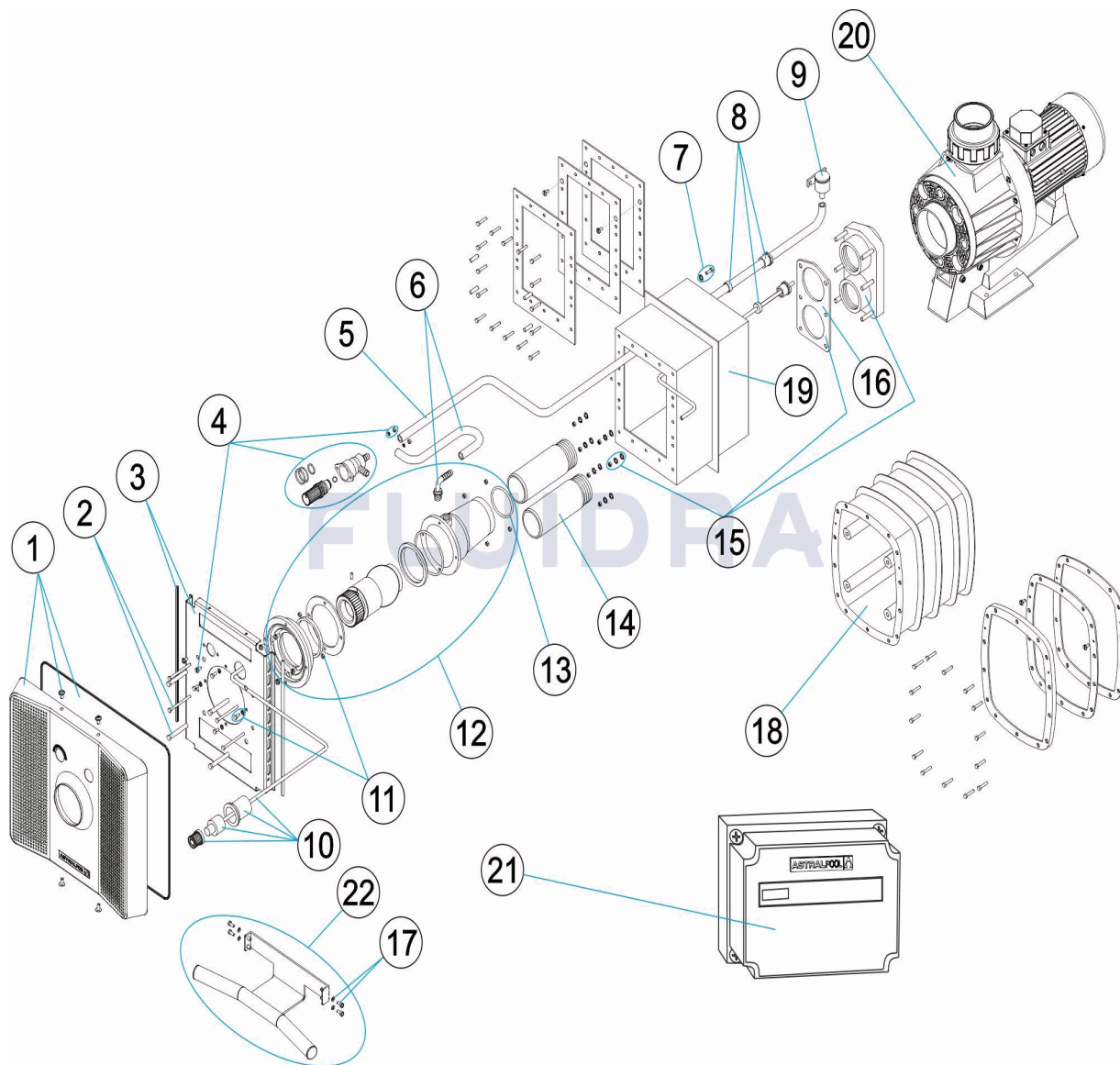
DESCRIPCION: EQUIPO NATACIÓN CONTRACORRIENTE NL

OBSERVACIONES

POS	CODIGO	OBSERVACIONES
2	* 4402050050	PARA: PARA LA CAJA DE PLÁSTICO 11502
2	* 4402050051	PARA: PARA LA CAJA DE INOX. 00243

CODE 65489, 65535, 66470, 66471

DESCRIPTION: ÉQUIPEMENT NAGE CONTRE-COURANT



FRANCAIS

POS	CODE	DESCRIPTION	QUANTITE	POS	CODE	DESCRIPTION	QUANTITE
1	4402050053	FACADE		12	4402050055	ENSEMBLE REFOULEMENT	
2	* 4402050050	VIS DE FIXATION INOX		13	4402050503	JOINT TORIQUE 63X4	
2	* 4402050051	VIS DE FIXATION		14	4402050118	MANCHETTE ASPIRATION / REFOULEMENT	
3	4402050054	PLAQUE DE FIXATION INOX ET PROFIL		15	4402050107	BRIDE DE CONNEXION AVEC JOINT	
4	4402050057	BOUTON DE REGLAGE D'AIR		16	4402050108	JOINT DE CONNEXION	
5	4401070015	CONDUIT ASPIRATION 1,5 M.		17	4402050058	VIS MAIN COURANTE	
6	4402050121	TUYAU D'ASPIRATION ET VENTURI L-300 N		18	11502		
7	4401090402	PRISE DE TERRE		19	00243	TENDEUR LIGNES	
8	4402050110	PRESSE ETOUPE		20	65549		
9	4402050109	VALVE ASPIRATION D'AIR		21	65536		
10	4402050056	BOUTON POUSSOIR		22	65535	MAIN COURANTE + VIS	
11	4402050052	VIS DE FIXATION					

CODE **65489, 65535, 66470, 66471**

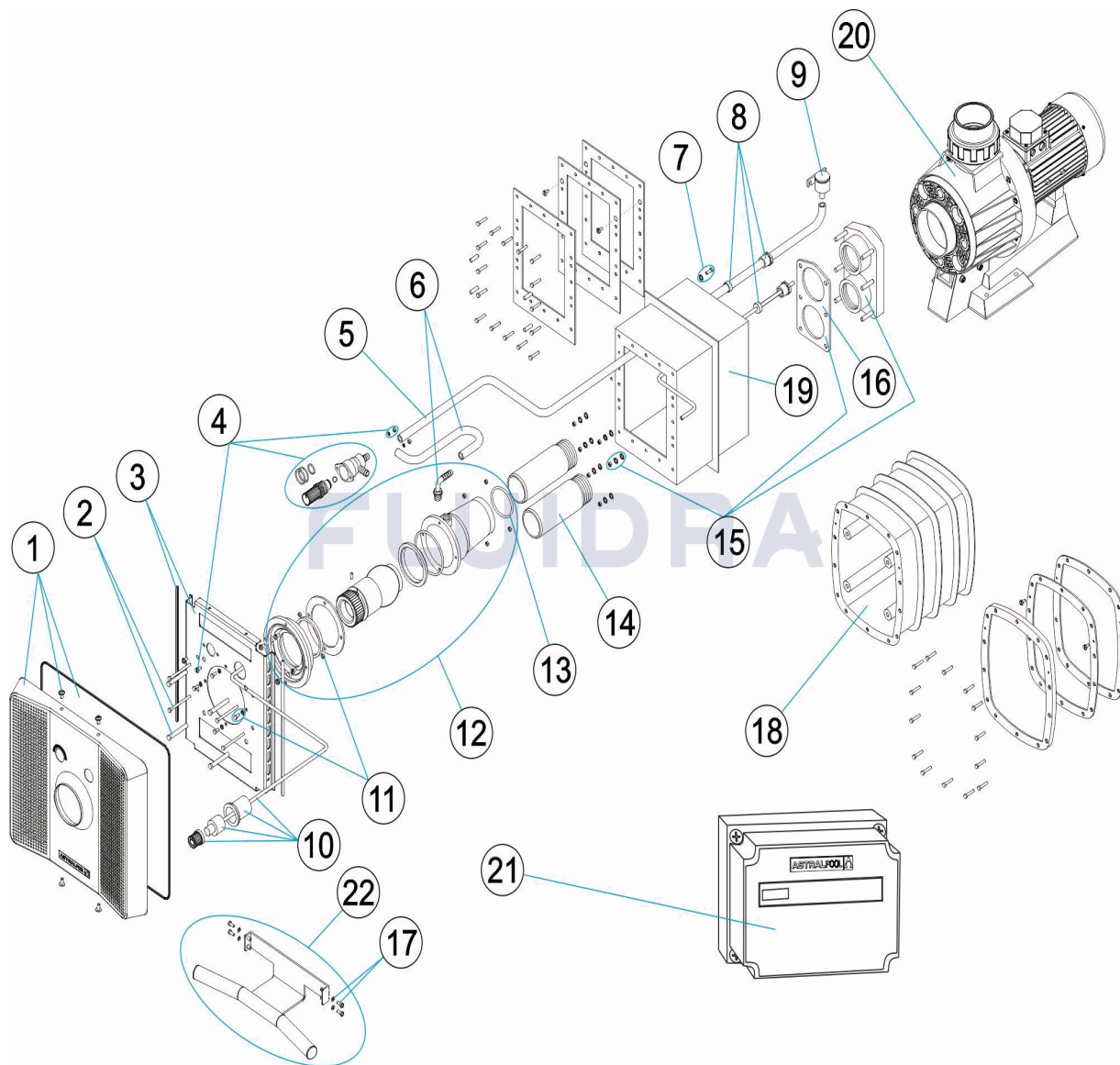
DESCRIPTION: **ÉQUIPEMENT NAGE CONTRE-COURANT**

OBSERVATIONS

POS	CODE	OBSERVATIONS
2	* 4402050050	POUR: PARA LA CAJA DE PLÁSTICO 11502
2	* 4402050051	POUR: PARA LA CAJA DE INOX. 00243

CODICE **65489, 65535, 66470, 66471**

DESCRIZIONE: **ATTREZZATURA NUOTO CONTROCORRENTE**



ITALIANO

POS	CODICE	DESCRIZIONE	QUANTITA'	POS	CODICE	DESCRIZIONE	QUANTITA'
1	4402050053	MASCHERA		12	4402050055	BOCCHETTA COMPLETA N.C.C.	
2	* 4402050050	BULLONERIA PER PIASTRA DI FISSAGGIO		13	4402050503	O-RING 63X4	
2	* 4402050051	BULLONERIA PER PIASTRA DI FISSAGGIO		14	4402050118	TUBO DI ASPIRAZIONE / MANDATA	
3	4402050054	PIASTRA DI FISSAGGIO INOX E PROFILO		15	4402050107	FLANGIA FISSAGGIO CON GUARNIZIONE	
4	4402050057	VALVOLA DI REGOLAZIONE N.C.C.		16	4402050108	GUANIZIONE PER COPERCHIO N.C.C.	
5	4401070015	CONDOTTO ASPIRAZIONE 1,5 M.		17	4402050058	KIT VITI CORRIMANO	
6	4402050121	CONDOTTO DI ASPIRAZIONE VENTURI L-3		18	11502		
7	4401090402	PRESA A TERRA		19	00243	TENDI-GALLEGGIANTI	
8	4402050110	PRESSACAVO N.C.C.		20	65549		
9	4402050109	VALVOLA DI ASPIRAZIONE ARIA		21	65536		
10	4402050056	PULSANTE COMPLETO		22	65535	CORRIMANO + VITI	
11	4402050052	BULLONERIA PER PIASTRA DI FISSAGGIO					

CODICE 65489, 65535, 66470, 66471

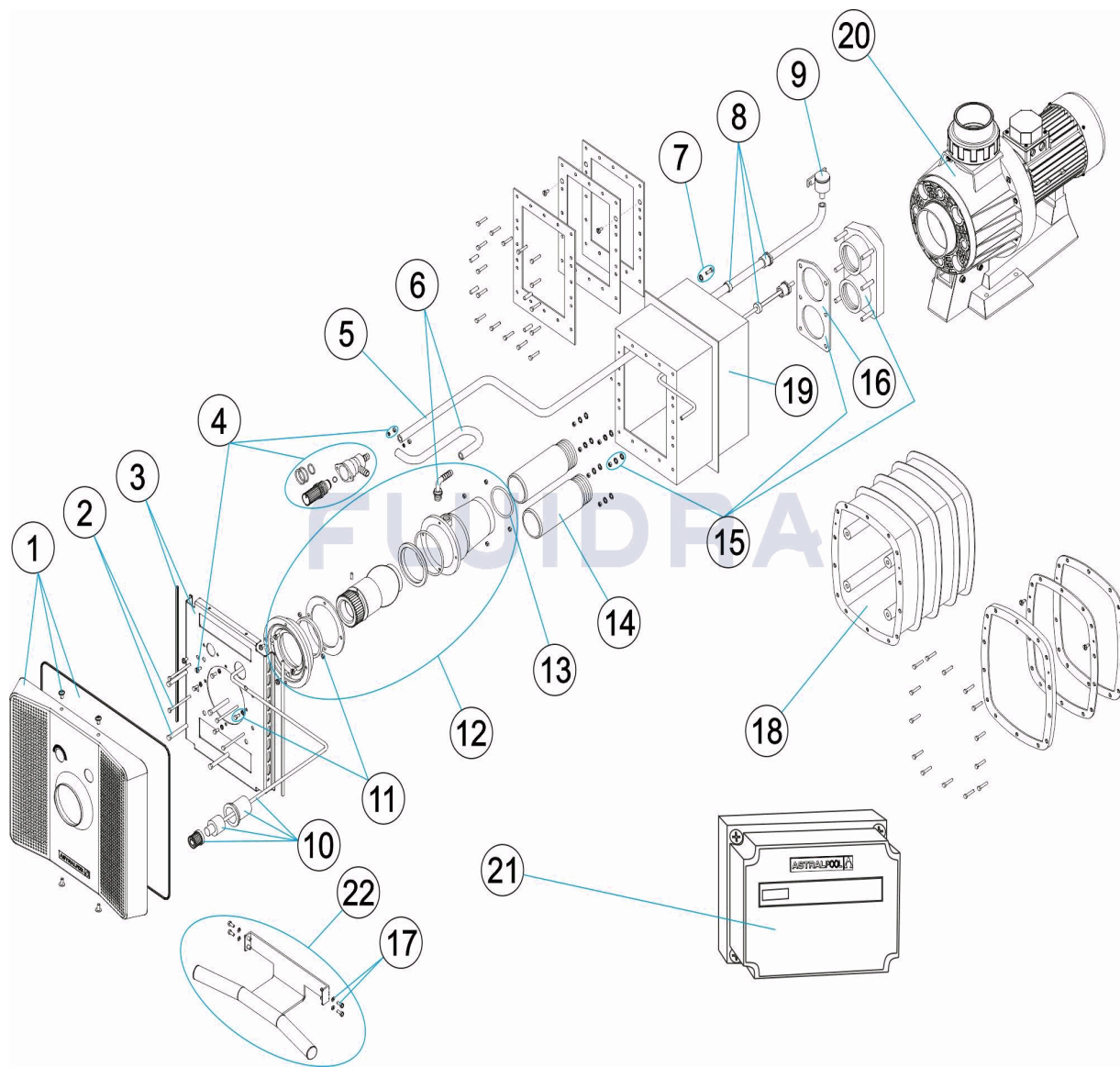
DESCRIZIONE: ATTREZZATURA NUOTO CONTROCORRENTE

OSSERVAZIONI

POS	CODICE	OSSERVAZIONI
2	* 4402050050	PER: PARA LA CAJA DE PLÁSTICO 11502
2	* 4402050051	PER: PARA LA CAJA DE INOX. 00243

CODIGO **65489, 65535, 66470, 66471**

DESCRIÇÃO: **EQUIPAMENTO NATAÇÃO CONTRA-CORRENTE**



PORTUGUES

POS	CODIGO	DESCRIÇÃO	JANTIDADE	POS	CODIGO	DESCRIÇÃO	JANTIDADE
1	4402050053	ESPELHO FRONTAL		12	4402050055	BOCA COMPLETA E.C.C.	
2	* 4402050050	PARAFUSOS PLACA FIXAÇÃO INOX.		13	4402050503	JUNTA TÓRICA 63X4	
2	* 4402050051	PARAFUSOS PLACA FIXAÇÃO		14	4402050118	TUBO ASPIRAÇÃO / IMPULSÃO	
3	4402050054	PLACA FIXAÇÃO INOX E PERFIL		15	4402050107	FLANGE LIGAÇÃO COM JUNTA	
4	4402050057	VÁLVULA REGULAÇÃO E.C.C.		16	4402050108	JUNTA TAMPA E.C.C.	
5	4401070015	TUBAGEM DE ASPIRAÇÃO 1,5 M.		17	4402050058	CONJ. PARAFUSOS AGARRADEIRA	
6	4402050121	TUBO ASPIRAÇÃO VENTURI L-300 M/M.		18	11502		
7	4401090402	LIGAÇÃO A TERRA		19	00243	TENSOR FLUTUADORES	
8	4402050110	BUCIN		20	65549		
9	4402050109	VÁLVULA ASPIRAÇÃO AR		21	65536		
10	4402050056	PURSÁTIL COMPLETO		22	65535	AGARRADEIRA + PARAFUSOS	
11	4402050052	PARAFUSOS PLACA FIXAÇÃO					

CODIGO 65489, 65535, 66470, 66471

DESCRIÇÃO: EQUIPAMENTO NATAÇÃO CONTRA-CORRENTE

OBSERVACÕES

POS	CODIGO	OBSERVACÕES
2	* 4402050050	PARA: PARA LA CAJA DE PLÁSTICO 11502
2	* 4402050051	PARA: PARA LA CAJA DE INOX. 00243