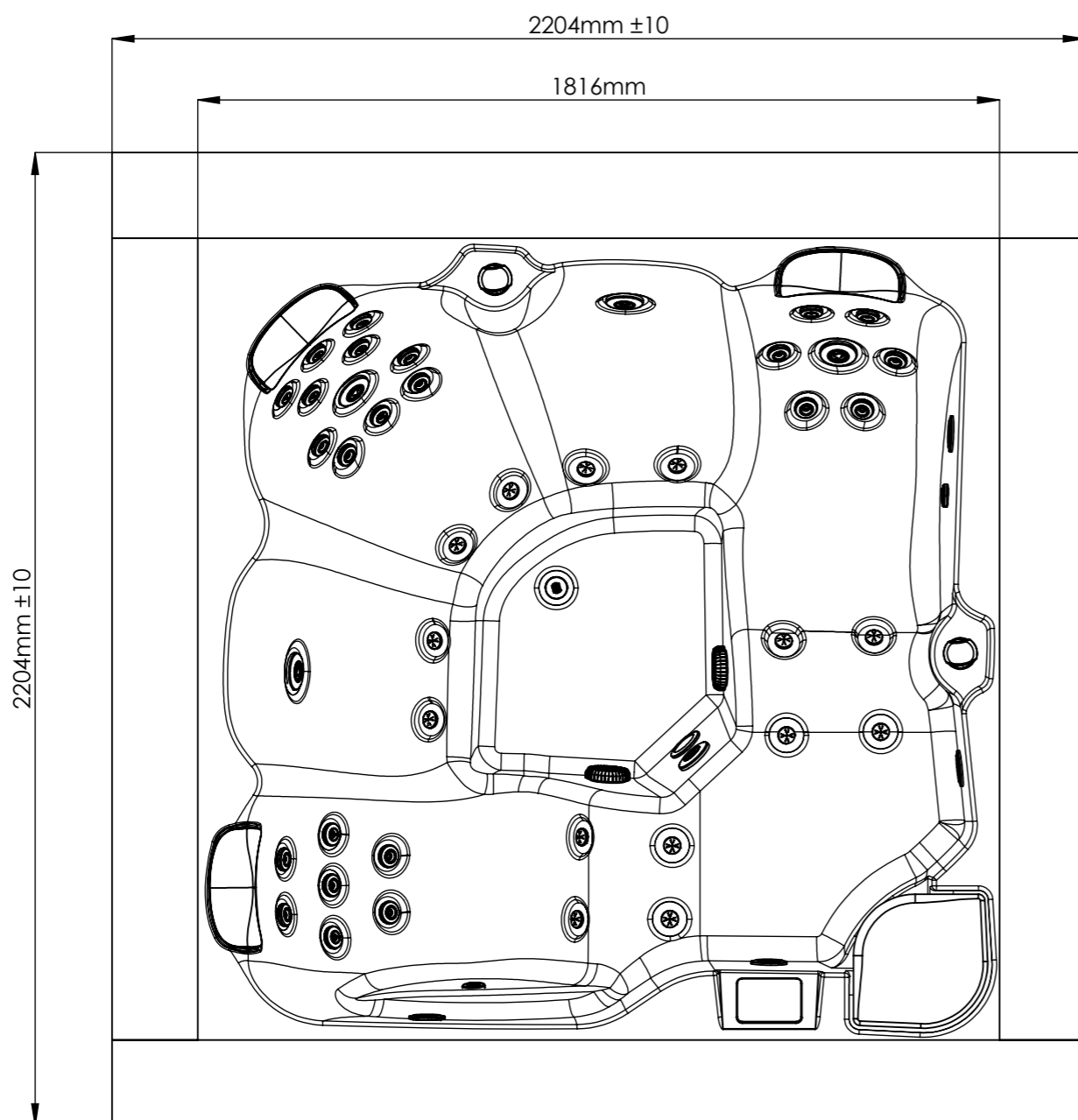
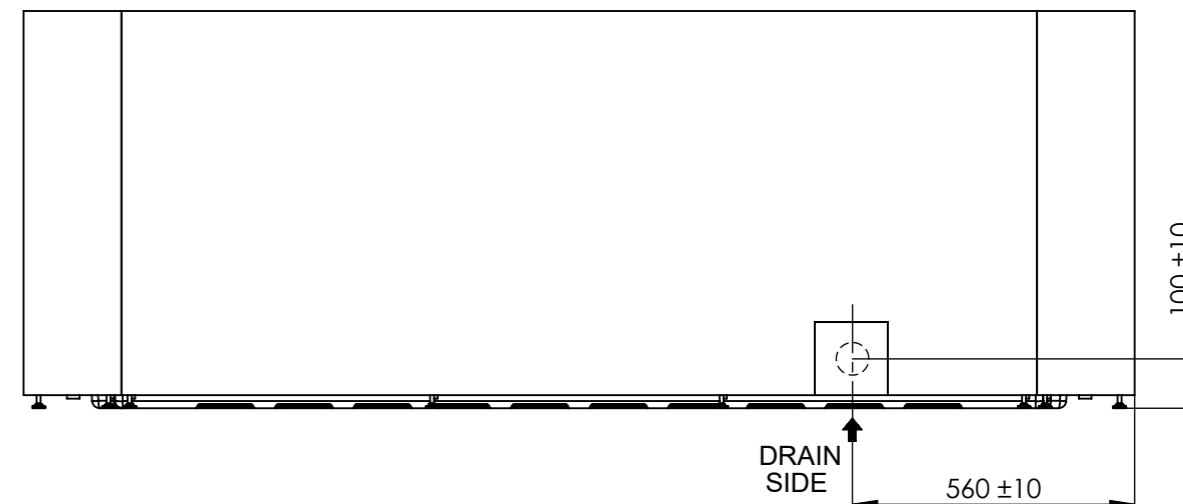
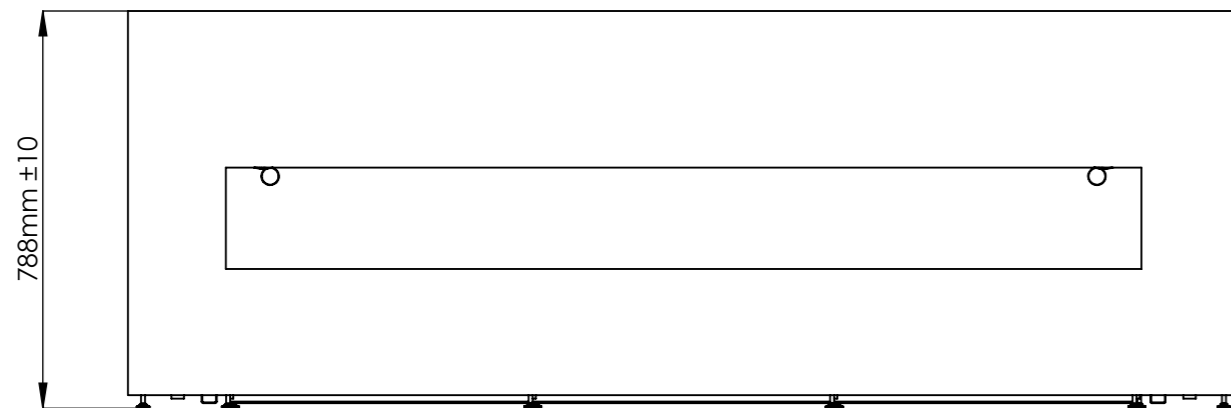
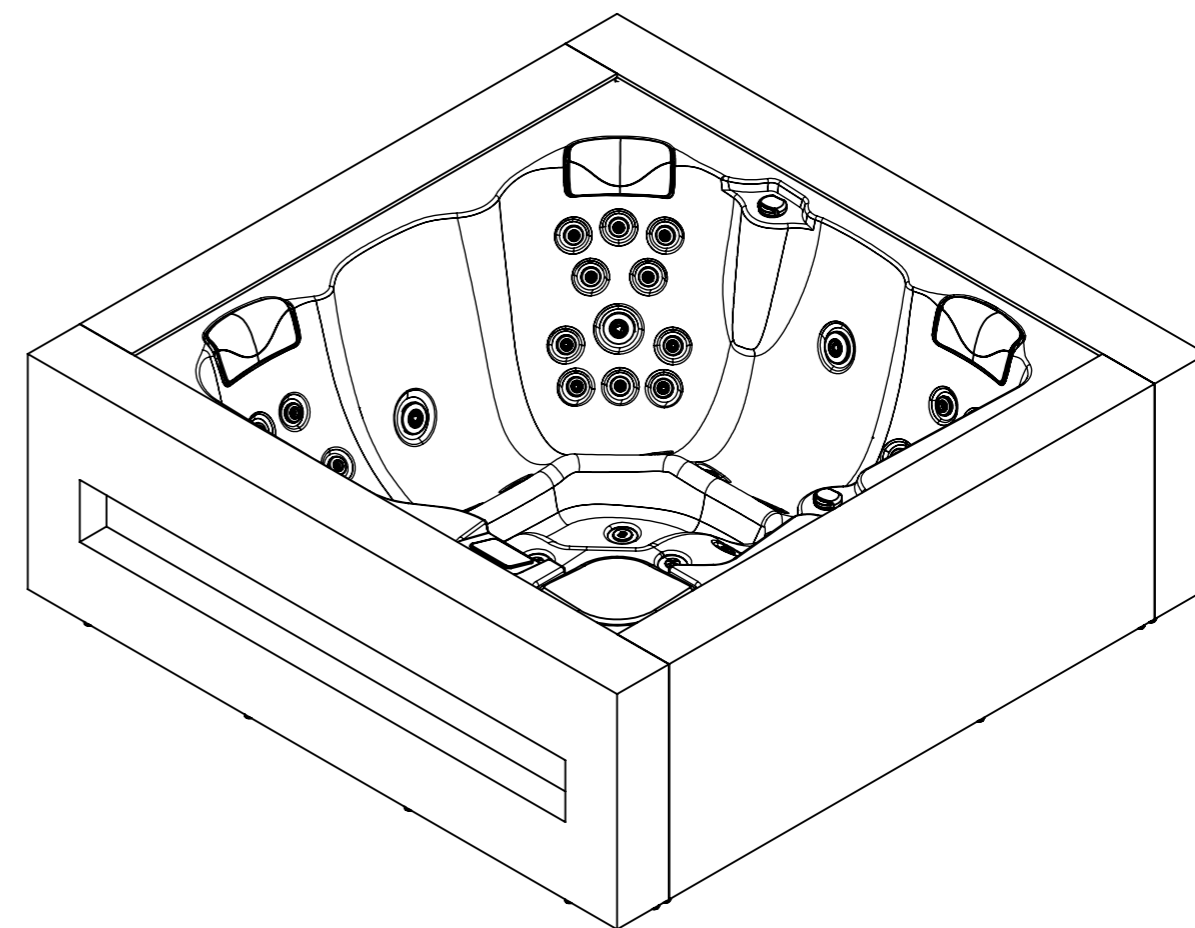


General specifications	
Spa weight (empty)	450 Kg
Spa weight (full)	1.425 Kg


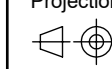


↑ ↑
ELECTRICAL BOARD CONNECTIONS ACCESS



According to our policy of continuous improvement, dimensions, features or components of this product can be partially or completely changed without prior notice. It's Customer responsibility to verify that this is the last version of the drawing

Change No.	Date	Name	Modification
03	18/02/2019	A. Miquel	Spa geometry changed.
02	11/02/2019	A. Miquel	Spa weight added.
01	11/10/2018	A. Miquel	Electronic parts references changed.

Remarks Dimensions in mm. General Tolerances +/- 10mm			COMMERCIAL		
Drawn	20/02/2017	R. Vallès		Part Number	Rev.
Checked	20/02/2017	V. Saiz		68449-CL	03
Scale 1:15	General Tolerance DIN 7168 ISO 2768g				
Sheet 1/3					